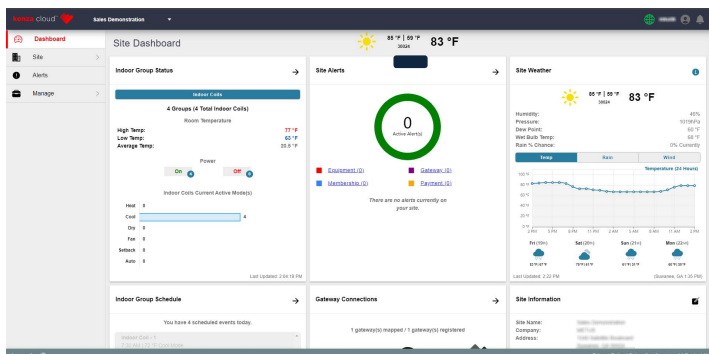


Job Name:

System Reference:

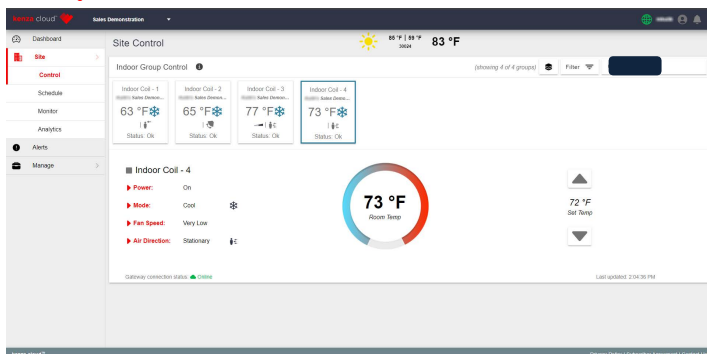
Date:

## FEATURED PAGES



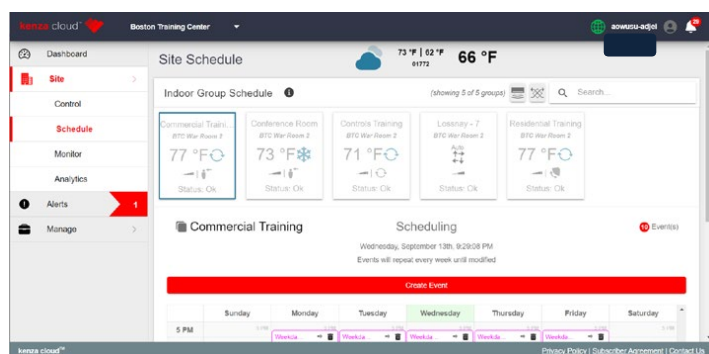
### Dashboard

- Site Unit Status
- Site Alerts
- Site Weather
- Indoor Unit Schedule
- Site Gateways
- Site Information
- Site Picture



### Site Control

- On/Off
- Set point
- Mode
- Fan speed
- Vane Direction
- Space Temperature (read only)



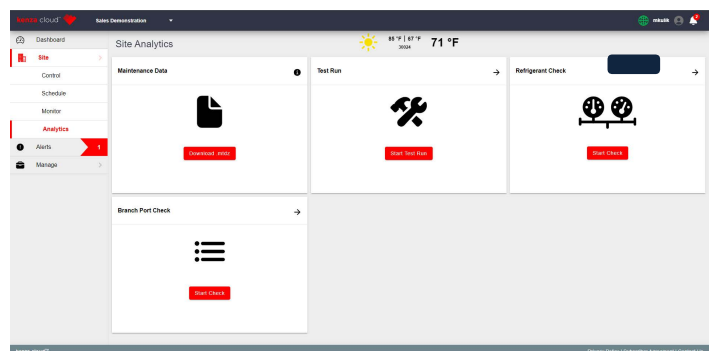
### Site Schedule

- Weekly Schedule
- Batch Schedule



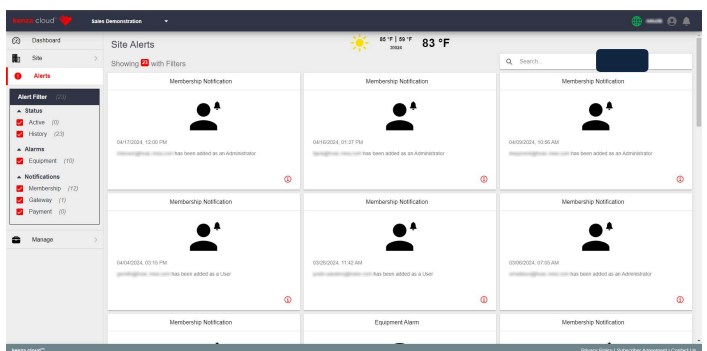
### Site Monitor

- Indoor Units
- Outdoor Units



### Analytics

- Maintenance Tool™ MTDZ. file
  - 1 day (selectable)
  - 5 Day (selectable)
- Test Run
- Refrigerant Check
- Branch Port Check



### Site Alerts

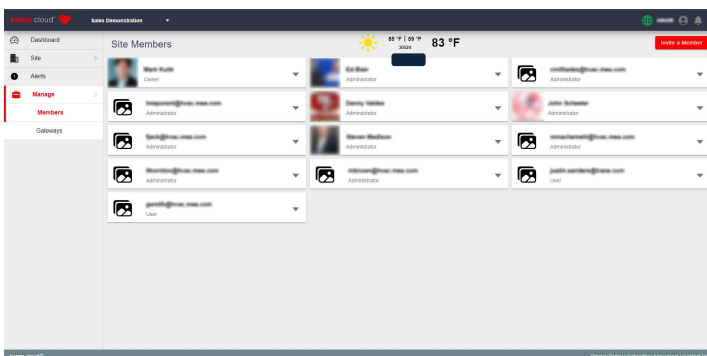
- Active and Historical alerts
- Equipment
- Membership
- Gateway
- Payment
- Batch Acknowledge

Job Name:

System Reference:

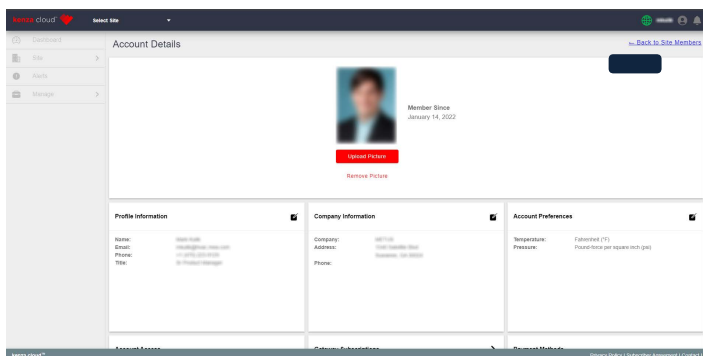
Date:

## FEATURED PAGES



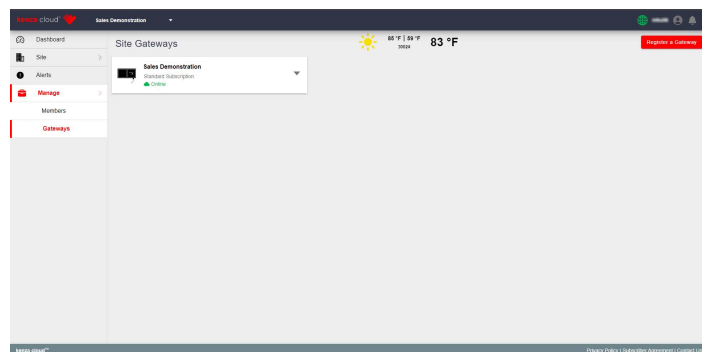
## Membership

- Invite new members
- Change member roles
- Remove a member



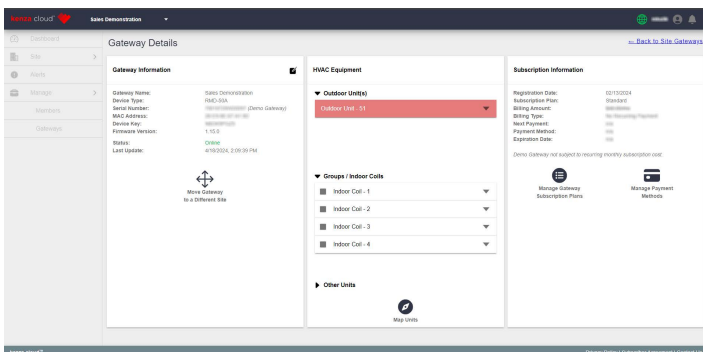
## Account Details

- Profile information
- Company information
- Set display units
- Manage passwords
- Manage subscriptions plans
- Manage gateways
- Update payment methods
- Deactivate Sites
- Deactivate Gateways



## Site Gateways

- Register new gateways
- Review gateway status



## Gateway Details

- Moving gateways between sites
- Auto discovery
- Editing outdoor unit information
- Assign indoor units to groups
- Rename groups
- Delete groups

## MEMBERSHIP TYPE ACCESS

Task	Site Owner	Administrator	User	Viewer
Editing profile or company information	✓	✓	✓	✓
Changing gateway subscription plans	✓	✗	✗	✗
Changing payment methods	✓	✗	✗	✗
Decommissioning a gateway	✓	✗	✗	✗
Editing site information	✓	✓	✗	✗
Removing a site from an account	✓	✗	✗	✗
Controlling HVAC systems	✓	✓	✓	✗
Monitoring a site	✓	✓	✓	✗
Viewing analytics	✓	✓	✓	✗
Deleting a site	✓	✗	✗	✗

Job Name:

System Reference:

Date:

## COMPATIBILITY CHART

# System Compatibility Chart

The below chart details equipment compatible with RMD gateways with kenza cloud™: Version 1.8.1

Y	PUHY-*-NU-A	Not Required
WY	PQHY-*-LMU-A	Not Required
R2	PURY-*-NU-A	Not Required
WR2	PQRY-*-LMU-A	Not Required
MXZ-SM w. C/M IDUs	MXZ-SM*	Not Required
M	MU(Z Y)* ; SUZ-*	MAC-334 (must be supported by IDU)
PUMY	HP-NKMU1 ; P-NKMU3	Not Required

Additional Note:

- Works with models listed, and newer versions.
- For M-Series IDUs can be monitored and controlled. M-Series ODU unit data does not display.

Excluded IDU models (not supported):

- PWFY
- CFM(R)
- PEFY-OA

Other excluded systems (not supported):

- MXZ-SM w. M&P IDUs
- P Series (U(Z|Y)-A\*7; PUZ-HA24NHA1; PUZ-HA(30|36)NKA; PUZ-HA42NKA1)
- QAHV

Additional Notes:

- kenza UI displays ODU, IDU, and Lossnay (RVX2-E); BCs, WBCs, etc. are not displayed
- Indoor units with outside air capabilities (PEFY-OA, Premisys) display as standard indoor units
- Legacy/deprecated not guaranteed to work